



METROPOL
متروپل وزرا

سؤالات آزمون یوس

دانشگاه سلجوق

۲۰۱۶



**SELÇUK
ÜNİVERSİTESİ
YÖS SORULARI
2016**

1. ve 2. soruları aşağıdaki verilen tabloya göre cevaplayınız.

*	1	2	3	4	5
1	5	4	3	2	1
2	4	3	2	1	5
3	3	2	1	5	4
4	2	1	5	4	3
5	1	5	4	3	2

Tabloda * işleminin görevi belirlenmiştir.

ÖRNEK :

$$1*2 = 4 \text{ ve } 3*4 = 5$$

$$1. (2*4)*x = 5 \Rightarrow x = ?$$

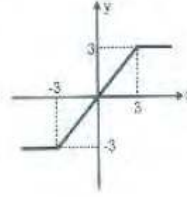
A)1 B)2 C)3 D)4 E)5

$$7. 2015^2 - 2014^2 = ?$$

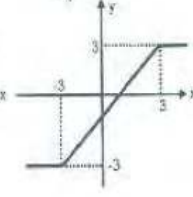
A)2019 B)4019 C)4029
D)4049 E)1

8. $f(x) = |x + 3| - |x|$ fonksiyonunun grafiği aşağıdakilerden hangisidir?

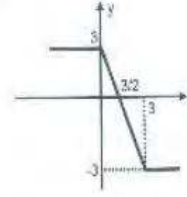
A)



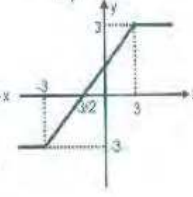
B)



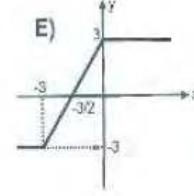
C)



D)



E)



$$13. \prod_{n=1}^x a_n = 9^{x!} \Rightarrow a_4 = ?$$

A)9³⁶ B)9²⁴ C)3⁵⁰ D)3³⁶ E)3²⁴

$$15. \int_0^3 \frac{x}{\sqrt{x+1}} dx = ?$$

A)12 B)6 C) $\frac{8}{3}$
D) $\frac{4}{3}$ E) $\frac{2}{3}$

21. I. $x \Delta y = xy - y^2$

II. $x * y = \frac{1}{3x+y}$

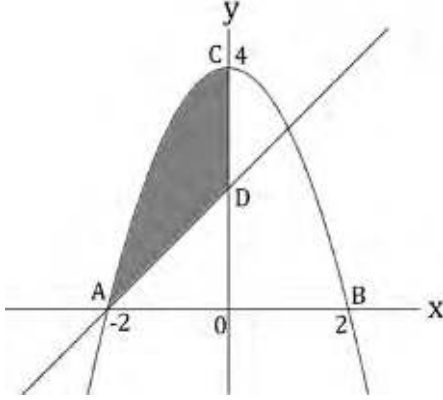
III. $(5 * 3)(7 \Delta 1) = ?$

I. ve II. eşitliklerde Δ ve $*$ işlemlerinin görevleri belirlenmiştir. Buna göre III. eşitlikte soru işareti yerine aşağıdakilerden hangisi gelmelidir?

A) 1 B) $\frac{1}{2}$ C) $\frac{1}{3}$

D) $\frac{1}{5}$ E) $\frac{1}{7}$

26.

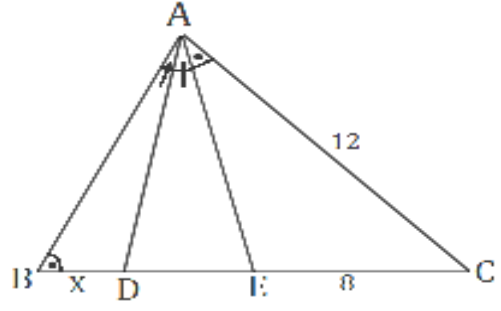


Yukarıdaki $y = 4 - x^2$ parabolünün grafiği çizilmiştir. $|OD| = |DC|$ olduğuna göre, taralı bölgenin alanı kaç br^2 dir?

A) 4 B) $\frac{10}{3}$ C) 3

D) $\frac{8}{3}$ E) $\frac{5}{3}$

29.



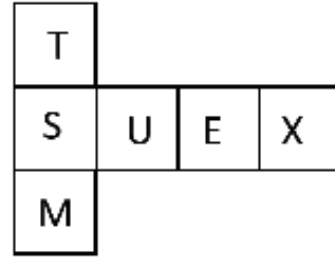
$m(\hat{A}BC) = m(\hat{E}AC)$, $m(\hat{B}AD) = m(\hat{D}AE)$,

$|AC| = 12 \text{ cm}$, $|EC| = 8 \text{ cm}$, $|BD| = x = ?$

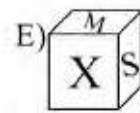
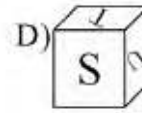
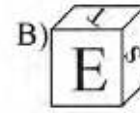
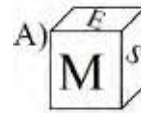
A) 6 B) 7 C) 8

D) 9 E) 1

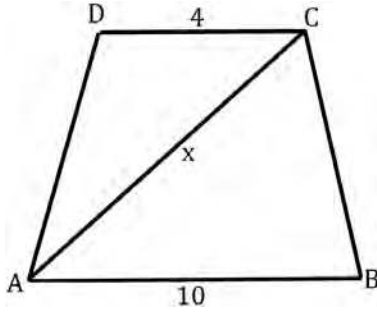
31.



Yukarıdaki şekil bir küpün açılmış hali ise aşağıdakilerden hangisi bu küpün kapalı hali olabilir?



35.



$[AB] \parallel [DC]$, $|DC| = 4 \text{ cm}$, $|AB| = 10$

$|AD| = |BC|$, ABCD ikizkenar yamuğu teğetler dörtgeni olduğuna göre, $|AC| = x$ kaç cm dir?

- A) $\sqrt{89}$ B) 9 C) $6\sqrt{2}$
D) 8 E) $2\sqrt{5}$

40. $i^2 = -1$ olmak üzere,

$$\left(i + \frac{i}{2}\right) \cdot \left(i + \frac{i}{3}\right) \cdot \left(i + \frac{i}{4}\right) \cdot \dots \cdot \left(i + \frac{i}{49}\right) = ?$$

- A) 25 B) $25i$ C) -25
D) $-25i$ E) -50

41. $\sqrt{1,44} + \sqrt[3]{0,027} - \sqrt[4]{0,0625} = ?$

- A) 4 B) -1 C) -2
D) 2 E) 1

45.

+	a	b	c
a		5c	
b			9
c	5		

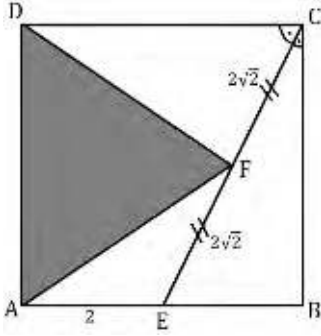
Yukarıdaki toplama tablosunda a,b ve c harfleri pozitif birer sayının yerine kullanılmıştır. Buna göre c kaçtır?

- A)1 B)2 C)3
D)4 E)5

49. $A = \begin{bmatrix} 2 & -1 \\ 0 & 3 \end{bmatrix}$, $B = \begin{bmatrix} 4 & -2 \\ 1 & 3 \end{bmatrix}$ matrisleri veriliyor. Buna göre $\det(A \cdot B) = ?$

- A)84 B)81 C)80
D)78 E)75

65.



ABCD dik dörtgeni için $[CE]$ bir açıortay,

$|CF| = |FE| = 2\sqrt{2}$ cm ve $|AE| = 2$ cm olduğuna göre, ADF üçgenin alanını bulunuz?

A)6

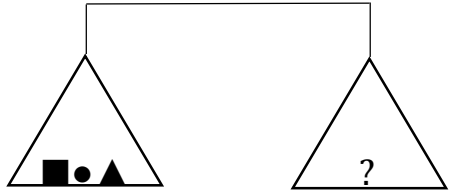
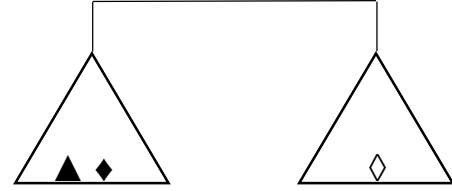
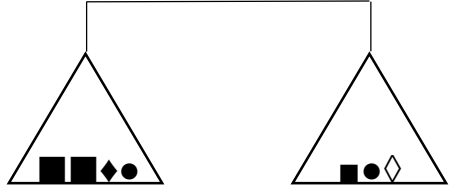
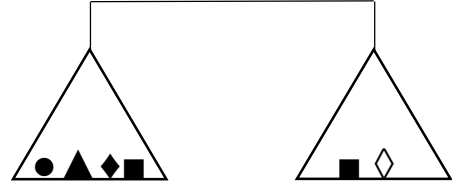
B)8

C)9

D)10

E)12

74.



Yukarıdaki terazilerin dördü de dengede olduğuna göre IV. terazideki soru işareti aşağıdakilerden hangisini göstermektedir?

A) ●●◆◆

B) ●◆

C) ◆■▲

D) ●●▲▲

E) ◆▲▲

1-A

7-C

8-E

13-D

15-C

21-C

29-A

31-C

35-A

40-A

41-E

45-B

49-A

65-B

74-D